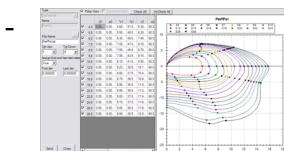


FaroManager is the FaRo's remote interface. Connected via ethernet, FaroManager is a practical and intuitive graphic software covering all range of functions necessities to monitor, control and configure Faro.



## Features :

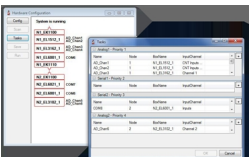


Configure the inputs (analogs, serials and pulses) in few simple steps

- Monitor constantly the hardware status
- Monitor, plot and calculate the averages of all the FaRo variables in real time
- Create and manage log files on the FaRo's compact flash, up to 100 Hz
- Control and modify all the instruments' calibrations, included the wind correction tables
- Edit the polar tables

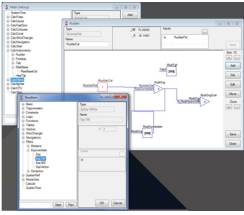
- Configure the on-board displays
- Change filters settings on the displayed variables
- Toggle between main and spare instruments

## Hardware Wizard:



With the Hardware Wizard, the user can manage every change in FaRo's configuration. The Scan function

## Math Designer:



Math Designer is the powerful graphical tool that gives the user the full control of the mathematic relation

## Simulation Package:



The Simulation package allows to replay logged data and to test any possible change in the Faro's math